

## Components for BZC Control Stations

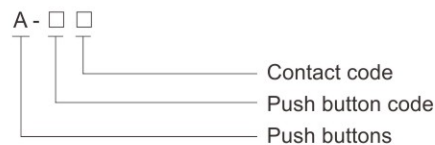
### HA Flameproof push button



- ◆ Explosion protection to
  - CENELEC
  - IEC
  - NEC
- ◆ Can be used in
  - Zone 1 and Zone 2
  - Zone 21 and Zone 22
  - Class I, Zone 1 and Zone 2
  - Class I, Division 1, Groups A, B, C, D
- ◆ Five different ways of operation
  - Spring-return push button
  - Key-operated push button
  - Mushroom stay-put emergency push button
  - Mushroom turn-to-release emergency push button
  - Rotary push button
- ◆ Mushroom stay-put emergency push button mushroom turn-to-release emergency push button can be equipped with protection cover, please specify when ordering. Material of protection cover: stainless steel and PC, please specify when ordering.

#### ■ Catalogue number logic

HA (A for short)



#### Technical data

##### HA Flameproof push button

##### Explosion protection

Global (IECEX)  
Gas and dust

IECEX CML 17.0161U

Ex db IIC Gb

Ex tb IIIC Db

Europe (ATEX)

CML 17 ATEX 1289U

Gas and dust

⊕ II 2 G Ex db IIC Gb

⊕ II 2 D Ex tb IIIC Db

##### Certificates

IECEX; ATEX

##### Conformity to standards

EN 60079-0, EN 60079-1, EN 60079-31

IEC 60079-0, IEC 60079-1, IEC 60079-31

##### Rated voltage

660V AC; 440V DC

##### Rated current

10A (for 660V AC); 6A (for 440V DC)

##### Degree of protection

IP66

##### Ambient temperature

-60°C~+70°C

# Zones 1&2; 21&22

## Components for BZC Control Stations

### HA Flameproof push button

Selection table

Cover mounting	Specification	Code	Ordering code	Weight (kg)
	Spring-return push button ● Red ● Green ● Yellow ● Black ● Blue ○ White	a	40036A	0.15
		b	40036B	0.15
		c	40036C	0.15
		d	40036D	0.15
		e	40036E	0.15
		p	40036F	0.15
	Mushroom stay-put emergency push button Red	f	40037	0.27
	Mushroom turn-to-release emergency push button Red	g	40040	0.27
	Key-operated mushroom emergency push button Red	h	40040A	0.30
	Rotary push button Black	i	40039	0.27
	Key-operated push button Black	j	40038	0.27
	Push button with indicator ● Red ● Green ● Yellow ● Blue ○ White	k	40057A	0.15
		l	40057B	0.15
		m	40057C	0.15
		n	40057D	0.15
		o	40057E	0.15



## Components for BZC Control Stations HA Flameproof push button

### Selection table of push button contact

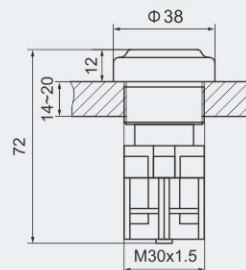
Version	Specification	Contact code	Ordering code	Weight (kg)
 Screw type	 1NC	T1	40023	0.03
	 1NO	S1	40024	0.03

### Accessories

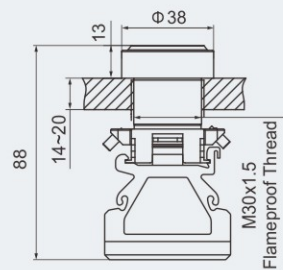
Description	Material	Ordering code	Weight (kg)
Emergency push button protection cover 	PC	40196	0.03
Emergency push button protection cover 	Stainless steel	40197	0.15
Emergency push button warning plate 	LF2	40198	0.003



### Dimension drawings (all dimensions in mm) - subject to alteration



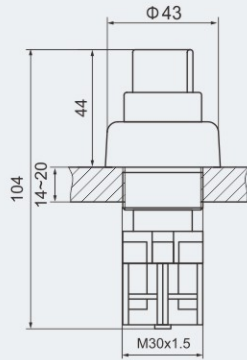
Flameproof Thread  
Spring-return push button



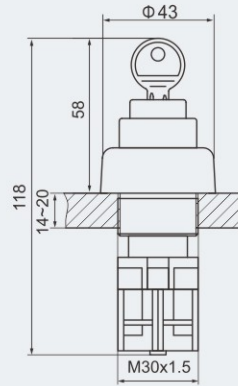
M30x1.5  
Flameproof Thread  
Push button with indicator

## Components for BZC Control Stations HA Flameproof push button

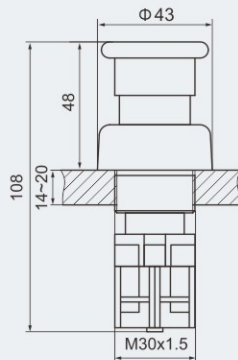
**Dimension drawings** (all dimensions in mm) - subject to alteration



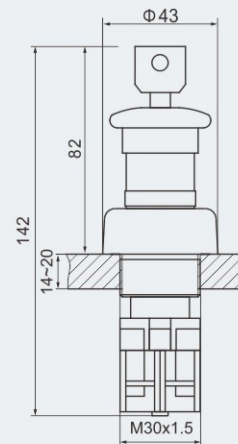
Flameproof Thread  
Rotary push button



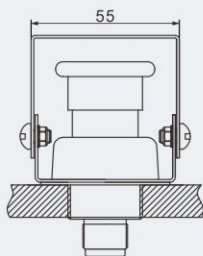
Flameproof Thread  
Key-operated push button



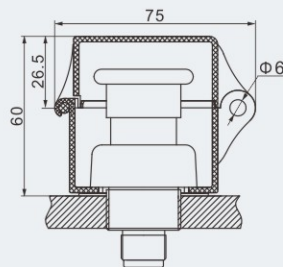
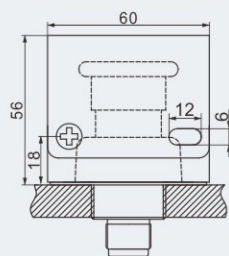
Flameproof Thread  
Mushroom stay-put/ turn-to-release  
emergency push button



Flameproof Thread  
Key-operated mushroom  
emergency push button



HA Emergency push button with  
stainless steel protection cover



HA Emergency push button with  
PC protection cover

